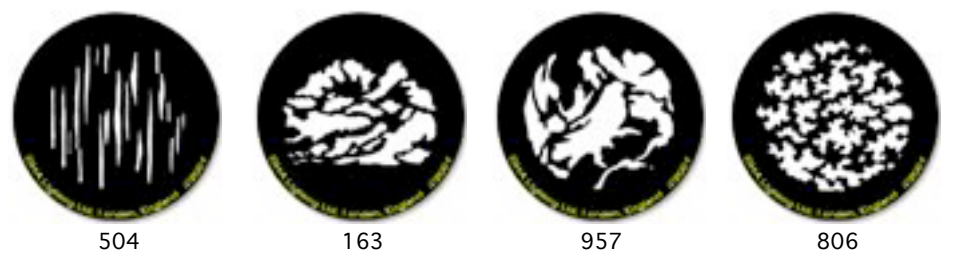
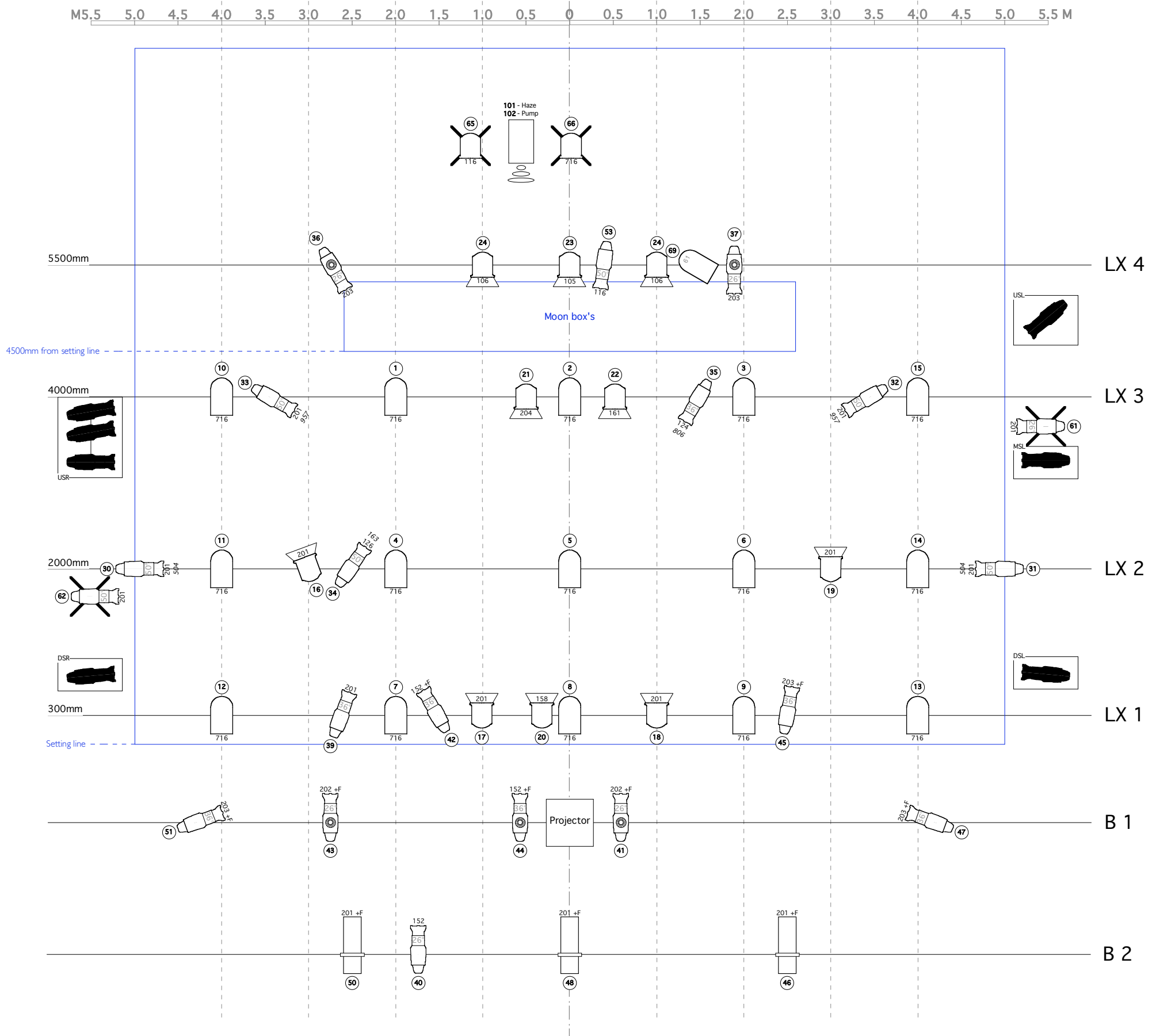
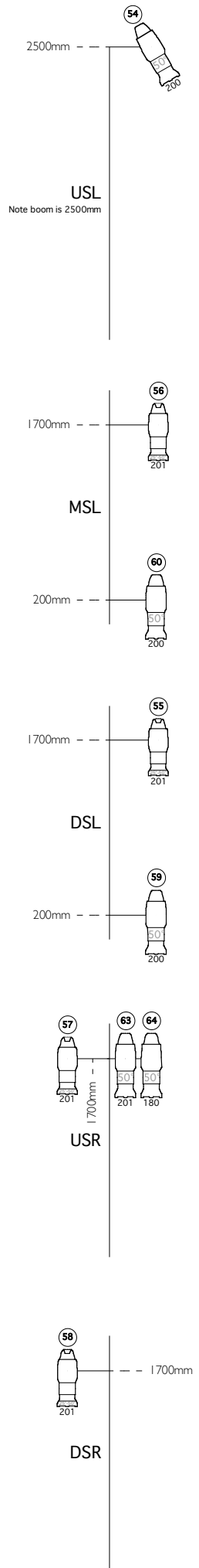


**Booms**



Instruments		Num In Inventory	Used	Remaining
	PAR 64 (CP62)	0	15	-15
	Source 4 26deg	0	6	-6
	Source 4 36deg	0	7	-7
	1.2k fresnel	0	12	-12
	Source 4 50deg	0	12	-12
	Cantata 18-32	0	3	-3
	PAR 64 (CP61)	0	1	-1
	Source 4 Jr Zoom	0	4	-4
Accessories		Num In Inventory	Used	Remaining
	254mm Barn Door	0	10	-10
	Floor stand	0	4	-4
	Iris	0	5	-5
	Hazer	0	1	-1
Legend				
		Template Color		
		Channel		

**Electrics Plan**  
 Niki McCretton's Space 50  
 Generic tour plan  
 Scale: 1:50 (A3) Rev. 3.0 Date: 14/02/07

**General notes**  
 - Deads on LX 1 - 4 @ 6500mm.  
 - Boom measurements are from stage level to centre of the lens.  
 - F = #119. Please fit all frost behind the gel frame.

**Additional channels**  
 100 - House LX  
 150 - Projector 'flap'